

LEGEND

REUSERS - ROANOKE 138 KV REBUILD PROJECT

EXISTING TRANSMISSION FACILITIES

Stations

TRANSMISSION LINES
DESIGN KV

69 KV
138 KV
345 KV
500 KV
765 KV

ROAD CLASSIFICATIONS

- Circle Highway (Interstate)
- Hard Surface
- All Weather Surface
- Light Surface
- Unsurfaced

HIGHWAY ROUTE SIGNS

- Interstate Highway
- US Highway
- VA Primary Highway
- VA Secondary Highway
- Frontage Road
- Forest Highway
- US Bicycle Route

RAILROADS

- Single Track
- Two or More Tracks
- Regional Metro

BOUNDARIES

- State Line
- County Line
- Agricultural District Line
- Incorporated Town or City
- Park, Reservation, or Forest Boundary

CITY AND VILLAGE CENTERS

- State Capital
- County Seat
- Town or Village

MISCELLANEOUS

- Place of Worship
- School
- Park & Ride Lot
- Transmission Line
- Bridge
- Primary Road Distances

PORTS

- Seaport
- Military Airport
- Commercial Airport
- Other Airport

Request for information on roads shown on this map should be addressed to:
Salim Odeh, Administrator, Virginia Department of Transportation
731 Harrison Avenue, Salem, VA 24153
804-987-6322 (TTY users, call 711)

DISTANCES SHOWN ON MAP MAY NOT BE OFFICIAL DISTANCES.
Distances shown on Primary Roads are between Primary Road Intersections and/or county lines. Distances shown on Secondary Roads are between intersections and corporate limits or county lines. Municipal Center for Primary roads shown only for features such as roads, bridges, etc. are on the center line of such features. The accuracy or completeness of this map is not guaranteed or warranted.

Map depicts state-maintained highway network as of January 1, 2011.
Copyright © 2014 by Commonwealth of Virginia
Department of Transportation. All Rights Reserved.

ROANOKE COUNTY, VA

VDOT
Virginia Department of Transportation

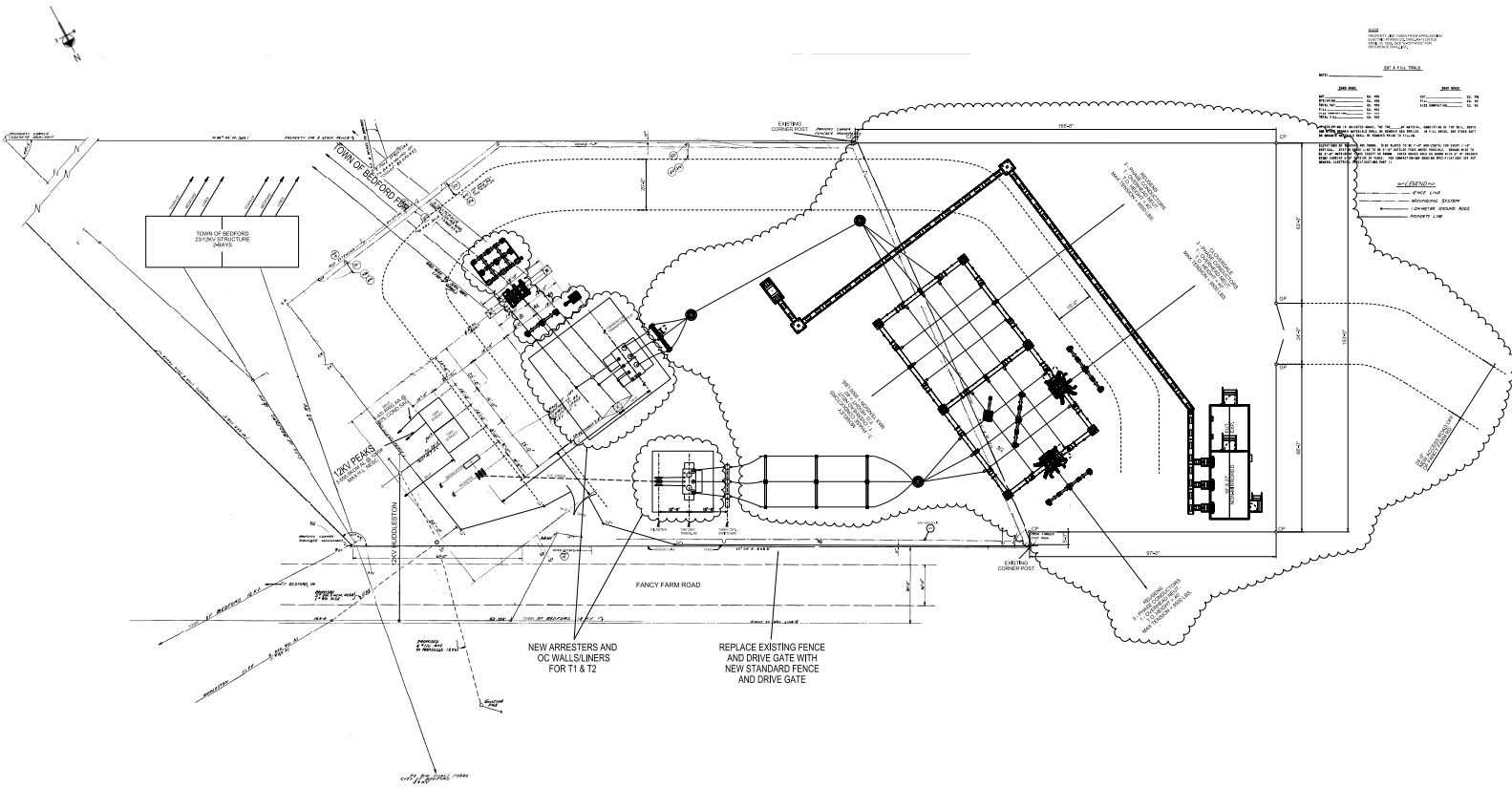
COUNTY ROAD MAP

ROANOKE COUNTY

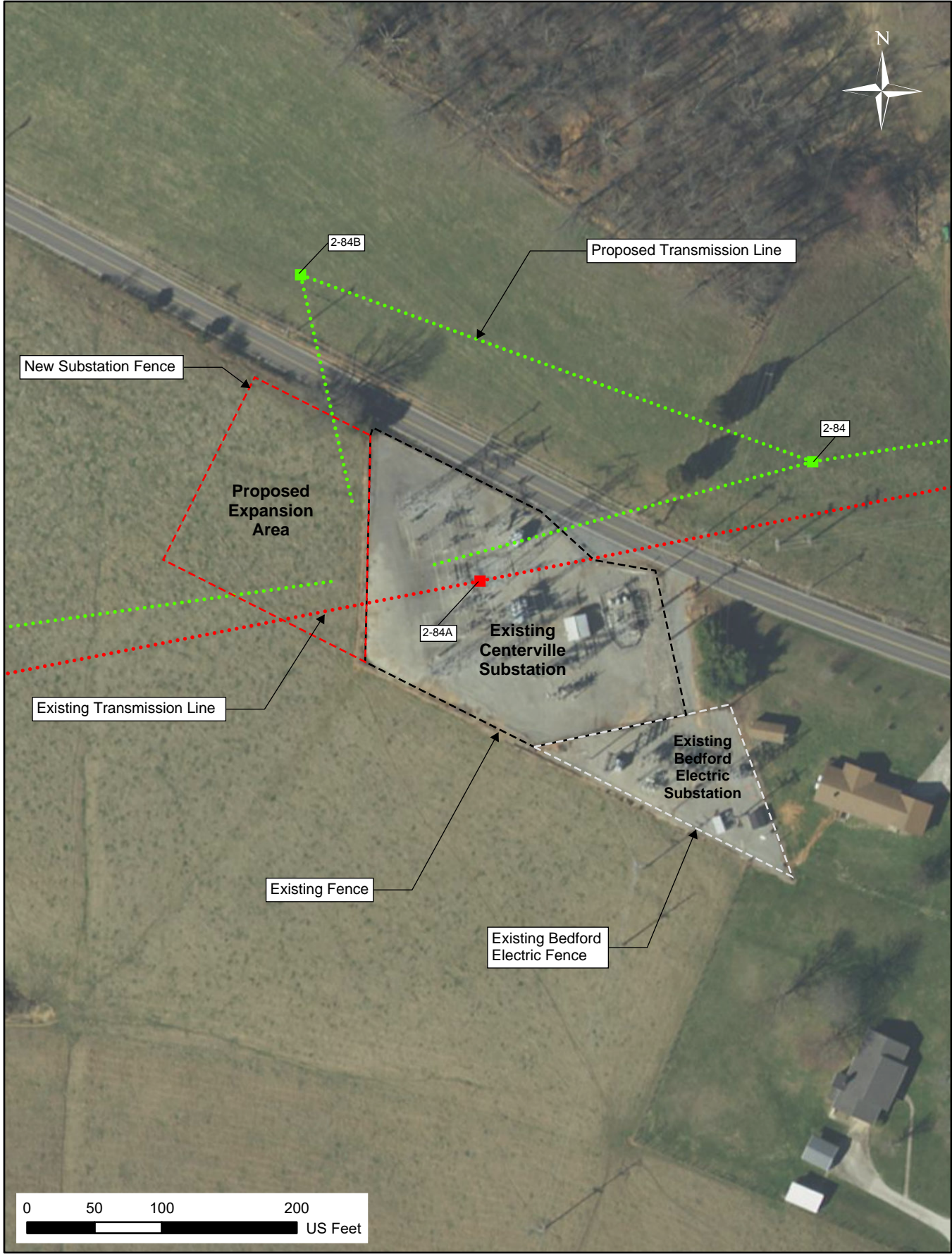
Supplement B

AN INVENTORY OF STATE-MAINTAINED ROADS
ROANOKE COUNTY, VA 808

**EXHIBIT 13: IMPROVEMENTS AT CENTERVILLE
SUBSTATION**



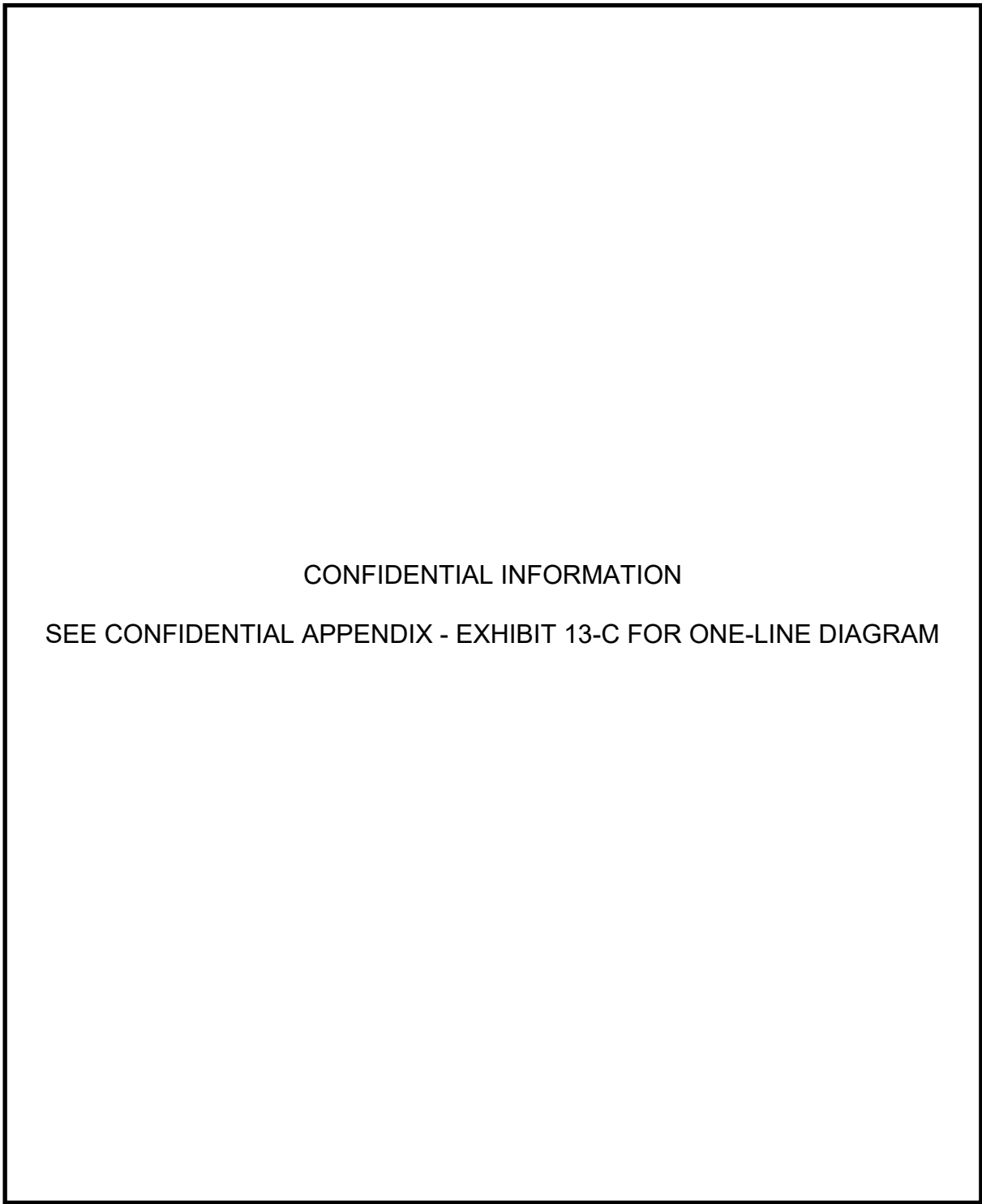
PROPOSED SUBSTATION LAYOUT



SUBSTATION LOCATION MAP



EXISTING CENTERVILLE SUBSTATION (LOOKING WEST)



CONFIDENTIAL INFORMATION

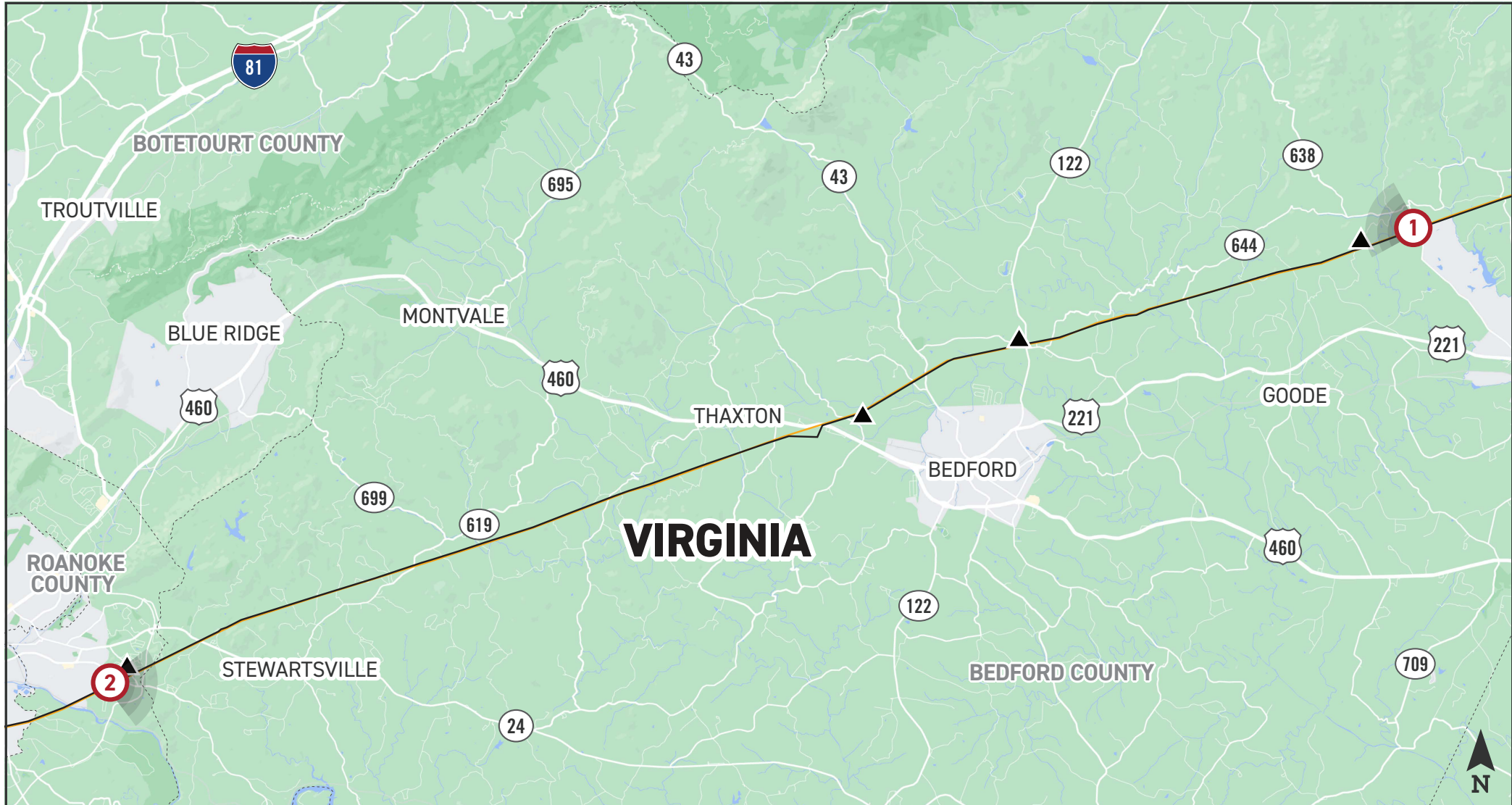
SEE CONFIDENTIAL APPENDIX - EXHIBIT 13-C FOR ONE-LINE DIAGRAM

PROPOSED SUBSTATION ONE-LINE

EXHIBIT 14: VISUAL SIMULATIONS

REUSENS TO ROANOKE 138 KV REBUILD PROJECT

- EXISTING TRANSMISSION LINE
- PROPOSED TRANSMISSION LINE
- PHOTO VIEWPOINT LOCATION
- EXISTING SUBSTATION






REUSENS TO ROANOKE 138 KV REBUILD PROJECT

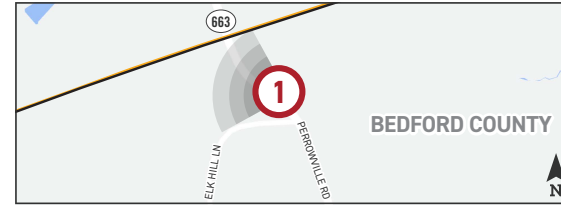
PHOTO VIEWPOINT 1

DATE:
05/11/2022

TIME:
10:05 AM

DIRECTION:
NORTHWEST

-  EXISTING TRANSMISSION LINE
-  PROPOSED TRANSMISSION LINE
-  PHOTO VIEWPOINT LOCATION



EXISTING CONDITIONS

PROPOSED CONDITIONS

PHOTO SIMULATIONS ARE FOR VISUALIZATION PURPOSES ONLY. FINAL DESIGN IS SUBJECT TO CHANGE PENDING PUBLIC, UTILITY, AND REGULATORY REVIEW.





REUSENS TO ROANOKE 138 KV REBUILD PROJECT

PHOTO VIEWPOINT 2

DATE:
05/11/2022

TIME:
1:02 PM

DIRECTION:
EAST

-  EXISTING TRANSMISSION LINE
-  PROPOSED TRANSMISSION LINE
-  PHOTO VIEWPOINT LOCATION
-  EXISTING SUBSTATION



EXISTING CONDITIONS

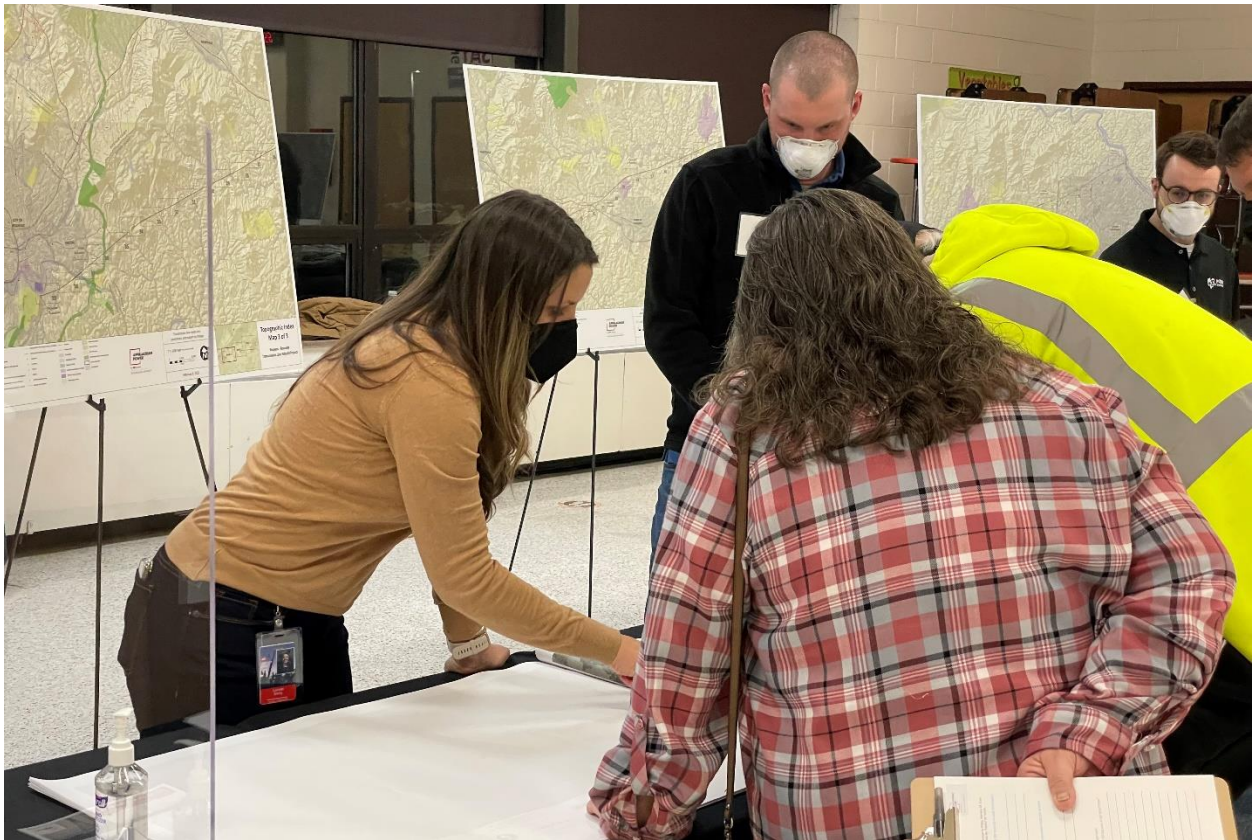


PROPOSED CONDITIONS

PHOTO SIMULATIONS ARE FOR VISUALIZATION PURPOSES ONLY. FINAL DESIGN IS SUBJECT TO CHANGE PENDING PUBLIC, UTILITY, AND REGULATORY REVIEW.

EXHIBIT 15: OPEN HOUSE PHOTOS

Open House at William Byrd Middle School in Vinton – February 8, 2022



Open House at Montvale Elementary School in Bedford County – February 9, 2022



Boonsboro Elementary School in Lynchburg – February 10, 2022



EXHIBIT 16: PUBLIC NOTICE MAP

REUSENS-ROANOKE TRANSMISSION LINE REBUILD PROJECT

